

Certification

Industrial property rights registration

2004.	11.	29	Door lock device (New device registration no. 0369717)
2005.	02.	14	Wireless electronic lock device (Program registration 2005-01-219-000784)
2005.	06.	21	[REMOCK] (Trademark registration no. 0622017)
2005.	07.	05	Door lock device (Patent registration no. 0497596)
2005.	08.	10	Electronic door lock device (New device registration no. 393165)
2006.	12		Remote controlled door lock device (Patent registration no. 10-0663114)

Industrial property rights application

2005.	02.	18	Remote controlled door lock device (Patent application 10-2005-0013375)
2005.	09.	26	Front door padlock (Design application 30-2005-0035889)
2005.	10.	25	Door lock stopper (Utility application 20-2005-0030262)
2005.	10.	25	Front lock padlock (Design application 30-2005-0032445)

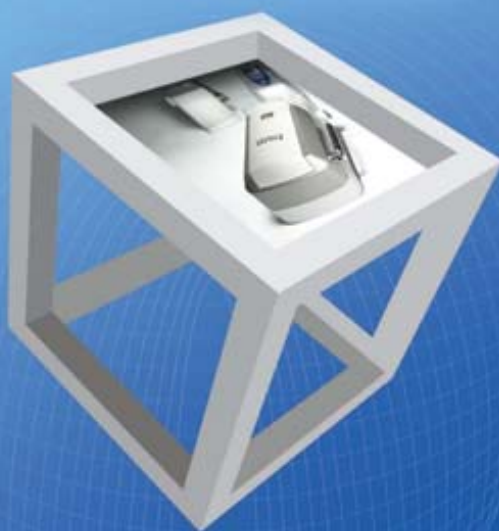
Status of certification

2005.	09.	22	ISO 14001:2004 certification (Korea International Standards Certification Authority)
2005.	07		Gyeonggi online trading frontier company (Gyeonggi governor)
2005.	04.	30	Good venture capitalist award (Gyeonggi Regional Office Small & Medium Business Administration)
2005.	10.	27	ISO 9001:2000 certification (VNZ)
2007.	06		Acquired the FCC authentication of wireless product.

Awards

2005.	04.	25	Venture capital company confirmation (Gyeonggi Regional Office Small & Medium Business Administration)
2006			Awarded with the bronze prize for the venture design.
2007.	06		awarded with the service management prize (digital door lock part) chosen by the Korean consumers.

REMOCK Lockey



 **HDT**

HYUNDAI TRADE CORP.

Tel : 82-2-989-0125, Fax : 82-2-989-0165

#1404 e-Tech Velly, 95-7 Suyu-dong Gangbuk-gu Seoul Korea 142-070



REMOCK Lockey



Invisible Door-Lock System
Security 100%



 HDT

HYUNDAI TRADE CORP.

REMOCK Lockey



Inside Door-Lock

Meet a Door-Lock REMOCK LOCKEY that's different...



Advantages of remote lock key only



Complete supplementation of blind points in the existing door lock security

As it is installed inside the building, it's impossible to know from the outside if remote control lock key system has been installed or not. It is also impossible to undo the locking system or pick the lock, using electronic vibrators or digital door unlocking devices.



Convenient operation by remote controller

One remote controller can be used at different places, and as one remote lock key can accept the maximum 16 lock registrations, it can be conveniently used by the extended family, or in the office or officetel.



Easy and convenient installation

Due to the simple tape attaching system, it can be easily installed by anybody or anywhere, and no drilling job is necessary.



Reusability guaranteed

When attached or detached to the front door, no damage is done to the door or the locking system itself. It is economical, due to the reusability, even in case of moving the residence.

1 | Product specifications



- Method : ASK SINGLE CONVERSION
- Reception frequency : 315MHz (±500KHz)
- Operation temperature : -20°C~ 60°C (condition without freezing and dew condensation)
- Operation humidity : 5%~80% (condition without dew condensation)

2 | How to use product

Slide open battery cover from the main body in (▼) direction and put in 2 AA sized alkaline batteries

Firmly close battery cover at the main body

After installing device, always check whether the remote control is functioning properly with a person at the inside part of the door

(Check respectively at both sides of the door)

- Transmission distance from the remote control
- Best location for frequency transmission and receipt
- Adjust direction of the antenna (Best location will be 90° from the main body but this may differ according to the environment)
- Alarm tone will ring from the main body when locked or open

Lock. Open dial tone of product

- Lock button → single touch → "beep—" → main body locks up
- Open button → single touch → "beep, beep, beep" → open main body

! Alarm to inform time to change the battery

- When the LED starts flickering every four seconds and there is a cricket sound from the main body, the battery must be changed to a new one immediately

! Manual lever

- Manual lever is designed to open easy when pressed with a hand. It is safe for use in emergency situations such as fire



3 | Register and deleting remote control in main body



How to register

1. Open battery cover
2. Register button is located at the left center of the battery holder
3. Keep pressing the register button for 2 seconds using a thin device
4. LED will start flickering with a beeping tone
5. Press all 4 remote controls for a second until they make a beeping tone
6. Press the register button again for a second until they make a beeping tone
7. Registration completed. Check whether the main body is operating properly.

How to delete

1. Gather all remote controls that can be used when the remote control is lost
2. Register again with the above method
3. Registration for the lost remote control is deleted and thus safe to use



Register remote control





① | How to install and disassemble

4

Installation

1. First, insert supplementary bushing into the locking hole, and fasten it to the body. And then install it.
2. Take off adhesive tape from latch
3. Leave adhesive tape to main body and closely adhere key to the door pillar
4. Detach adhesive tape from the main body
5. Firmly attach main body in designated location
6. After deconstructing the bond, remove assistance bushing.
7. Firmly push adhered part to remove air in order to enhance adhesiveness between main body and the key.

Confirming product installation

- Test operation with a remote control whether it is accurately installed
- Let alone for 24-hours in order to enhance adhesive power of the adhesive tape

How to disassemble

1. Separate bolt on each sides of the base plate from the main body by using a cross screwdriver.
2. Cut off base plate adhering to the door slowly, pushing forward in a downward move, using fine but tough metal wire. (It uses same method for the latch.)
3. Adhesive tape on the door can be taken off by blowing with a hair dryer.



Companion product onestep stoper



One step installation method

1. Clean the attaching place with alcohol.
2. Detach the adhesive tape behind the lock.
3. Attach it 2cm above the floor. However, please adjust the attaching height, where there is a threshold in the floor.
4. Keep pressing the tape for 10 seconds, to increase the tape adhesive power.
5. Adjust the gap between the door with the adjusting bolt, in case of glass door installation.